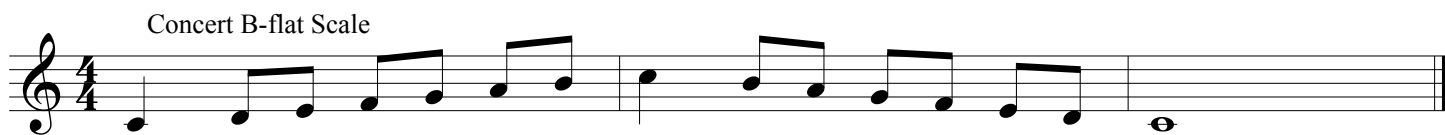


# Music for All - Placement Scales

## Middle School Concert Band Camp

### Placement Hearing Instructions

Placement hearings will consist of two scales, and an etude. The second scale can be performed as a one- or two-octave scale; whichever you prefer is fine. Perform each scale at a tempo that allows you to maintain steady pulse and play with your best note accuracy. A goal tempo is indicated for the etude. You should strive for this tempo, while remembering that note and rhythm accuracy are most important. Perform the etude at a tempo that will allow you to perform the music with the most accuracy.



*Perform either the one- or the two-octave version of the scale below.*



# Music for All Placement Etude - Trumpet

Todd Stalter

Moderato ♩ = 104

*f*

*mp*

*mf*

*f*