

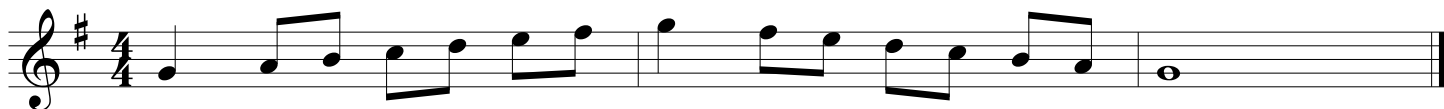
Music for All - Placement Scales

Middle School Concert Band Camp

Placement Hearing Instructions

Placement hearings will consist of two scales, and an etude. The second scale can be performed as a one- or two-octave scale; whichever you prefer is fine. Perform each scale at a tempo that allows you to maintain steady pulse and play with your best note accuracy. A goal tempo is indicated for the etude. You should strive for this tempo, while remembering that note and rhythm accuracy are most important. Perform the etude at a tempo that will allow you to perform the music with the most accuracy.

Concert B-flat Scale



Perform either the one- or the two-octave version of the scale below.

Concert F Scale (one-octave)



Concert F Scale (two-octave)



Music for All Placement Etude - Bari Sax

Todd Stalter

Andante ♩ = 96

mf

mp *f*

mp *f* *mp*

f