



# BANDS OF AMERICA SUMMER CAMP EARLY ARRIVALS MAP

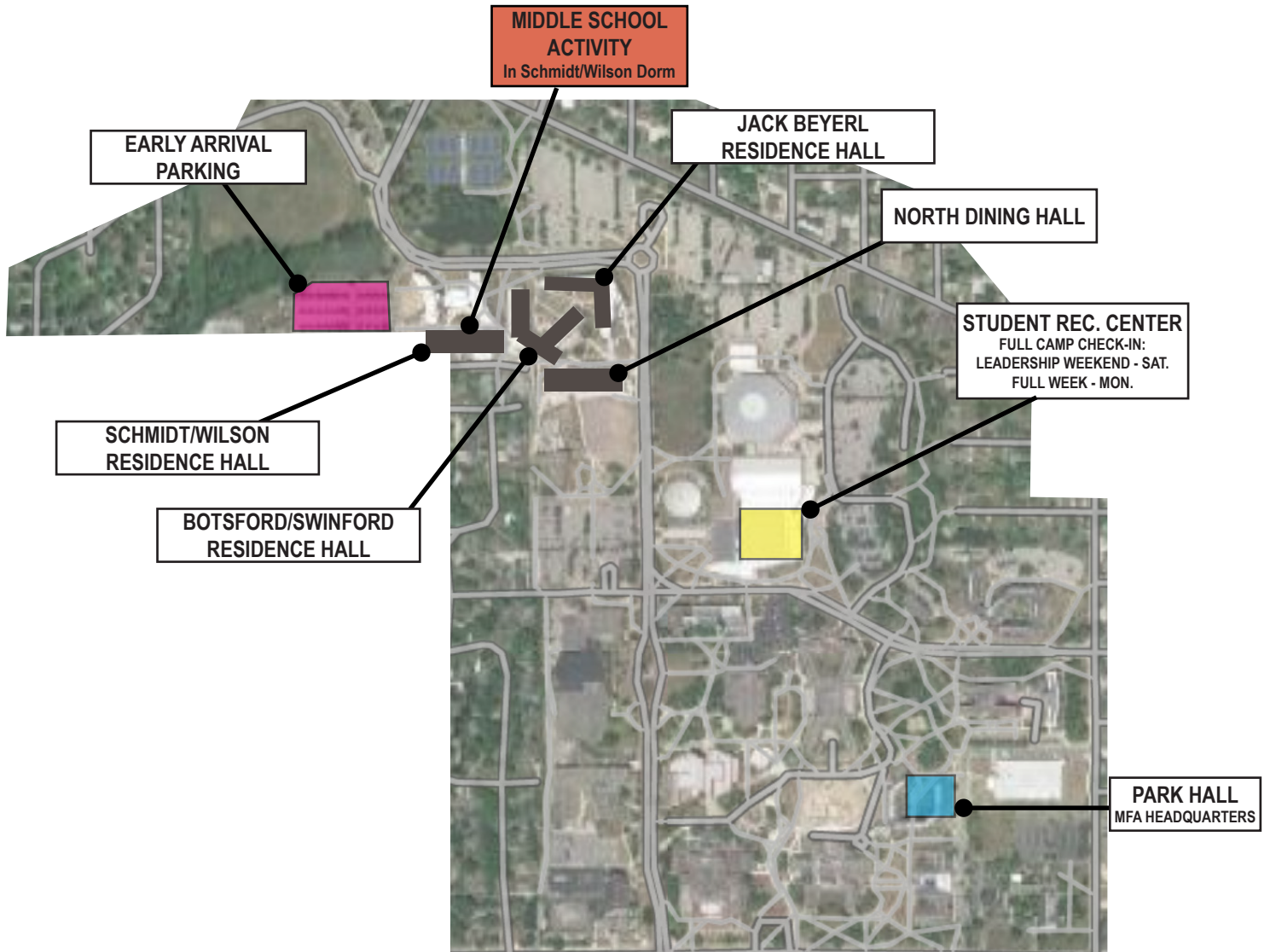
June 19 and June 21, 2026 - Ball State University, Muncie, IN

PRESENTED BY



YAMAHA

Sweetwater

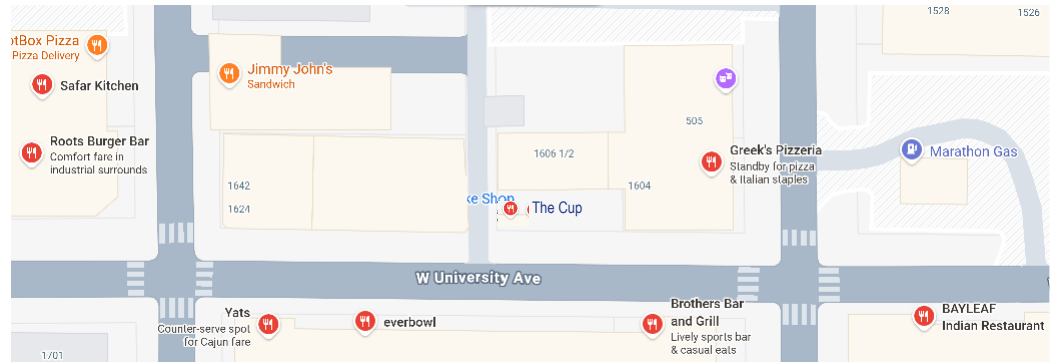
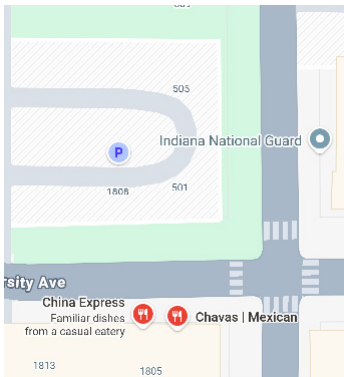


Bands of America Summer Camp planned activities begin at 5pm on Friday, June 19 and Sunday, June 21, 2026. Early Arrivals Check-in will be in each of the residential hall lobbies.

There are staff members around campus continuing to prepare for the week.  
If you need assistance prior to 5pm, call the event hotline (877) 643-6043.

There will be a MANDATORY attendance check-in (for those on campus) with staff at 5pm in the Dorm Lobby.

**BALL STATE UNIVERSITY: VILLAGE DINING OPTIONS**  
 These are just a short 10 minute walk to the south end of campus



**These locations are not part of your meal package but if you need options prior to check-in and scheduled meals these are with-in walking distance of dorms and check-in.**

**China Express:**

Hours:  
 Tues-Sat  
 11am - 10pm  
 Sunday  
 12 - 10pm  
 Mon: Closed

**Chavas Mexican:**

Hours:  
 Mon-Sun  
 11am - 12am

**Safar Kitchen:**

Hours:  
 Tues-Sun: 8am - 10pm  
 Mon: Closed

**Hot Box Pizza:**

Hours:  
 Sun-Wed: 11am - 10pm  
 Thurs- Sat: 11am - 11pm

**Root's Burger Bar:**

Hours:  
 Sunday  
 11am - 9pm  
 Mon-Sat: 11am - 10pm

**Jimmy John's:**

Hours:  
 Sun-Wed: 11am - 1am  
 Thurs-Sat: 11am - 4am

**Yats:**

Hours:  
 Mon-Sun: 11am - 7pm

**Everbowl:**

Hours:  
 Mon-Sun: 9am - 8pm

**The Cup: coffee shop**

Hours:  
 Mon-Fri 7am - 9pm  
 Sat-Sun 8am - 9pm

**Greeks Pizzeria:**

Hours:  
 Sun-Tues: 11am - 10pm  
 Wed-Sat: 11am - 12am

**Brothers:**

Hours:  
 Sun: 9am - 10am  
 Mon-Thurs: 7am - 10m  
 Fri: 7am - 11pm  
 Sat: 8am - 11pm

**Bayleaf Indian**

Hours:  
 Wed-Mon: 11am - 2:30pm  
 Wed-Mon: 4pm - 9:30pm  
 Tues: Closed

**Jacks Donuts**

Hours:  
 Mon, Fri, Sat: 6:30am - 3pm  
 Sun: 7am - 3pm  
 Thurs: 7:30am - 5pm  
 Tues & Wed: Closed

**Insomnia Cookies**

Hours:  
 Mon-Sun 11am - 12am